

Baldwin Hardware Corporation



Baldwin 2-1/2 and 2-3/4 backset Mortise locks are designed for residential use in UL-listed fire-rated openings rated for 3-hour maximum. Meets U.S. UL10C (positive pressure) and CANS-104M80. In the event of fire, lock will be permanently disabled when mechanism reaches temperatures above 400°F. Use in accordance with local fire code regulations.

Mortise Lock Installation Instructions

TOOLS REQUIRED

- | | |
|--|---|
| 1 Pencil | 9 Combination Square |
| 2 No. 2 and No. 3 Phillips Head Screwdrivers | 10 Awl |
| 3 No. 1 and No. 2 Slotted Screw Drivers | 11 Hacksaw |
| 4 1/8" Allen Head Wrench | 12 File (Wood Rasp and Metal) |
| 5 3/4" Wood Chisel or Corner Chisel | 13 Baldwin Aligning Tool |
| 6 Measuring Device | 14 Drill and assorted Drill Bits (1/16", 1/8", 5/16", 3/8", 3/4", 1", 1-1/4") |
| 7 Lock Mortising Tool (Recommended) | 15 Screw Wax or Soap |
| 8 Router and Lock Face Template | 16 Powder Chalk, Graphite or Lipstick |

Note: In order to successfully install a mortise lock and trim, a minimum of average skill level is required with use of the above listed tools.

Read and understand the provided instructions BEFORE attempting to mark or cut the door and/or frame. If there are any questions before you begin the installation, phone or visit your nearest Baldwin Distributor or contact the Technical Service Department at Baldwin at 610.777.7811.

Diagram A ENTRANCE HANDLESET

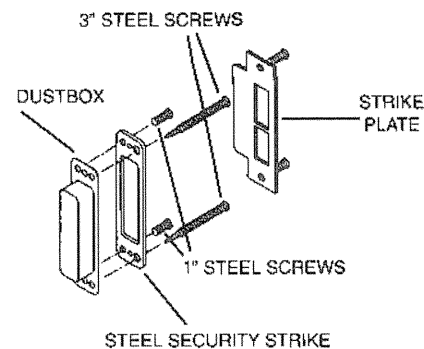
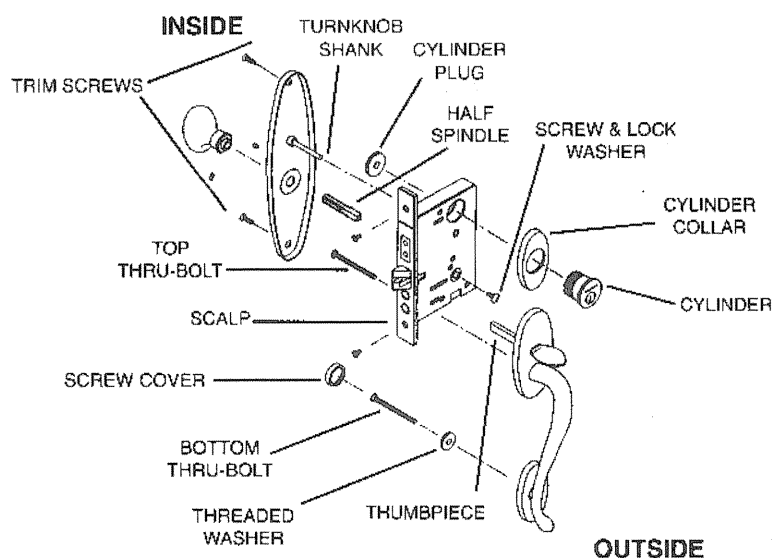
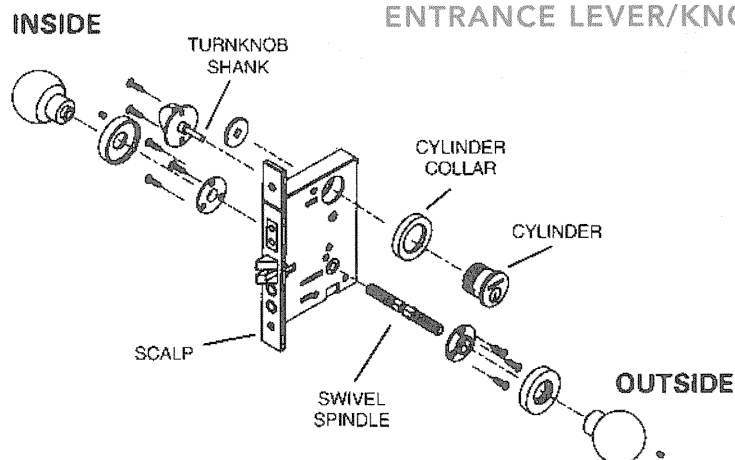
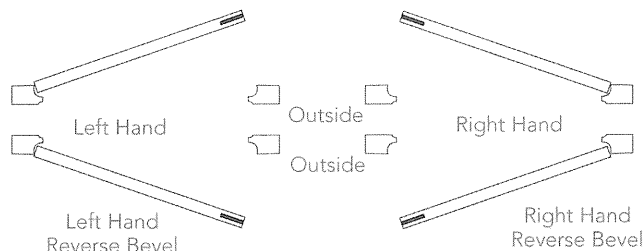


Diagram B ENTRANCE LEVER/KNOB SET



DOOR CONDITIONS



HAND OF DOOR IS ALWAYS DETERMINED FROM THE OUTSIDE

Here are some rules to follow:

- The outside of an exterior door is the street or entrance side.
- The outside of a room is the hall side.
- The outside of a single communicating door is the side from which the hinges are not visible when the door is closed.
- The outside of a closet door is the room or hall side.

GENERAL NOTES

Paper template is designed for 1-3/4" thick doors. For extra thick doors, measure backset from center of door edge. Tape supplied template to the door to locate fastener pattern for lock and trim.

When installing hardware on metal or fiberglass doors, ensure the door was designed to accommodate mortise locks. If in doubt, check with your local door distributor or door manufacturer.

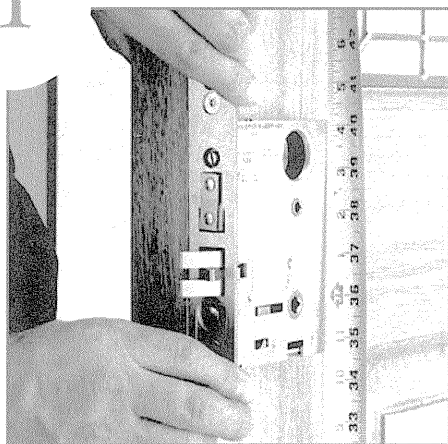
Removal of hardware from doors is recommended before painting and finishing of the door. Allow paint/stain to fully cure before reinstalling hardware, usually ten days to two weeks. Check paint manufacturer instructions.

Retain these instructions in a safe place should you need to disassemble the lock trim or require Baldwin's assistance.

Mortise Lock Handleset Installation Instructions

1

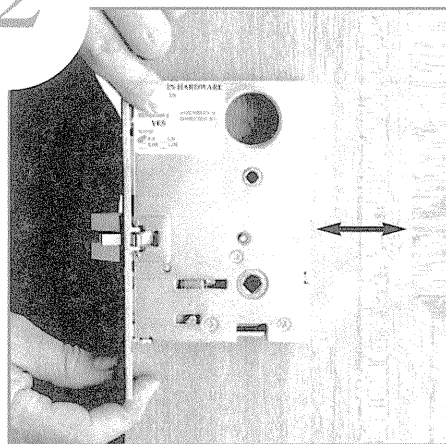
Mark the Door



Mark the door at 37-1/2" - 40" above finished floor, or if retrofit, at appropriate location to coordinate with existing strike preparations. This will be center line of the lock and will put the knob/lever at 36" - 39" above the floor.

2

Double Check Compatibility of Door Stile & Trim



Make sure that the door stile will accommodate the intended lock.

3

Determine Hole Pattern Required for Trim on Blue Sheet

BALDWIN INSTALLATION TEMPLATE FOR RESIDENTIAL AND LISTED MORTISE LOCKS

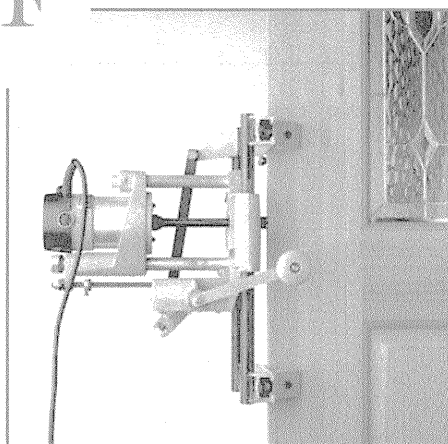
Go down left-hand column to find your Lock Number. Read across the page to determine the yellow Template enclosed to be used to transfer the hole pattern to the door.

LOCK NUMBER	LOCK TYPE	LOCK FUNCTION	LOCK TYPE	LOCK FUNCTION	LOCK TYPE	LOCK FUNCTION	LOCK TYPE	LOCK FUNCTION	LOCK TYPE	LOCK FUNCTION
6001	6001	6002	6003	6004	6005	6006	6007	6008	6009	6010
6011	6012	6013	6014	6015	6016	6017	6018	6019	6020	6021
6022	6023	6024	6025	6026	6027	6028	6029	6030	6031	6032
6033	6034	6035	6036	6037	6038	6039	6040	6041	6042	6043
6044	6045	6046	6047	6048	6049	6050	6051	6052	6053	6054
6055	6056	6057	6058	6059	6060	6061	6062	6063	6064	6065
6066	6067	6068	6069	6070	6071	6072	6073	6074	6075	6076
6077	6078	6079	6080	6081	6082	6083	6084	6085	6086	6087
6088	6089	6090	6091	6092	6093	6094	6095	6096	6097	6098
6099	6100	6101	6102	6103	6104	6105	6106	6107	6108	6109
6110	6111	6112	6113	6114	6115	6116	6117	6118	6119	6120
6121	6122	6123	6124	6125	6126	6127	6128	6129	6130	6131
6132	6133	6134	6135	6136	6137	6138	6139	6140	6141	6142
6143	6144	6145	6146	6147	6148	6149	6150	6151	6152	6153
6154	6155	6156	6157	6158	6159	6160	6161	6162	6163	6164
6165	6166	6167	6168	6169	6170	6171	6172	6173	6174	6175
6176	6177	6178	6179	6180	6181	6182	6183	6184	6185	6186
6187	6188	6189	6190	6191	6192	6193	6194	6195	6196	6197
6198	6199	6200	6201	6202	6203	6204	6205	6206	6207	6208
6209	6210	6211	6212	6213	6214	6215	6216	6217	6218	6219
6220	6221	6222	6223	6224	6225	6226	6227	6228	6229	6230
6231	6232	6233	6234	6235	6236	6237	6238	6239	6240	6241
6242	6243	6244	6245	6246	6247	6248	6249	6250	6251	6252
6253	6254	6255	6256	6257	6258	6259	6260	6261	6262	6263
6264	6265	6266	6267	6268	6269	6270	6271	6272	6273	6274
6275	6276	6277	6278	6279	6280	6281	6282	6283	6284	6285
6286	6287	6288	6289	6290	6291	6292	6293	6294	6295	6296
6297	6298	6299	6300	6301	6302	6303	6304	6305	6306	6307
6308	6309	6310	6311	6312	6313	6314	6315	6316	6317	6318
6319	6320	6321	6322	6323	6324	6325	6326	6327	6328	6329
6330	6331	6332	6333	6334	6335	6336	6337	6338	6339	6340
6341	6342	6343	6344	6345	6346	6347	6348	6349	6350	6351
6352	6353	6354	6355	6356	6357	6358	6359	6360	6361	6362
6363	6364	6365	6366	6367	6368	6369	6370	6371	6372	6373
6374	6375	6376	6377	6378	6379	6380	6381	6382	6383	6384
6385	6386	6387	6388	6389	6390	6391	6392	6393	6394	6395
6396	6397	6398	6399	6400	6401	6402	6403	6404	6405	6406
6407	6408	6409	6410	6411	6412	6413	6414	6415	6416	6417
6418	6419	6420	6421	6422	6423	6424	6425	6426	6427	6428
6429	6430	6431	6432	6433	6434	6435	6436	6437	6438	6439
6440	6441	6442	6443	6444	6445	6446	6447	6448	6449	6450
6451	6452	6453	6454	6455	6456	6457	6458	6459	6460	6461
6462	6463	6464	6465	6466	6467	6468	6469	6470	6471	6472
6473	6474	6475	6476	6477	6478	6479	6480	6481	6482	6483
6484	6485	6486	6487	6488	6489	6490	6491	6492	6493	6494
6495	6496	6497	6498	6499	6500	6501	6502	6503	6504	6505
6506	6507	6508	6509	6510	6511	6512	6513	6514	6515	6516
6517	6518	6519	6520	6521	6522	6523	6524	6525	6526	6527
6528	6529	6530	6531	6532	6533	6534	6535	6536	6537	6538
6539	6540	6541	6542	6543	6544	6545	6546	6547	6548	6549
6550	6551	6552	6553	6554	6555	6556	6557	6558	6559	6560
6561	6562	6563	6564	6565	6566	6567	6568	6569	6570	6571
6572	6573	6574	6575	6576	6577	6578	6579	6580	6581	6582
6583	6584	6585	6586	6587	6588	6589	6590	6591	6592	6593
6594	6595	6596	6597	6598	6599	6600	6601	6602	6603	6604
6605	6606	6607	6608	6609	6610	6611	6612	6613	6614	6615
6616	6617	6618	6619	6620	6621	6622	6623	6624	6625	6626
6627	6628	6629	6630	6631	6632	6633	6634	6635	6636	6637
6638	6639	6640	6641	6642	6643	6644	6645	6646	6647	6648
6649	6650	6651	6652	6653	6654	6655	6656	6657	6658	6659
6660	6661	6662	6663	6664	6665	6666	6667	6668	6669	6670
6671	6672	6673	6674	6675	6676	6677	6678	6679	6680	6681
6682	6683	6684	6685	6686	6687	6688	6689	6690	6691	6692
6693	6694	6695	6696	6697	6698	6699	6700	6701	6702	6703
6704	6705	6706	6707	6708	6709	6710	6711	6712	6713	6714
6715	6716	6717	6718	6719	6720	6721	6722	6723	6724	6725
6726	6727	6728	6729	6730	6731	6732	6733	6734	6735	6736
6737	6738	6739	6740	6741	6742	6743	6744	6745	6746	6747
6748	6749	6750	6751	6752	6753	6754	6755	6756	6757	6758
6759	6760	6761	6762	6763	6764	6765	6766	6767	6768	6769
6770	6771	6772	6773	6774	6775	6776	6777	6778	6779	6780
6781	6782	6783	6784	6785	6786	6787	6788	6789	6790	6791
6792	6793	6794	6795	6796	6797	6798	6799	6800	6801	6802
6803	6804	6805	6806	6807	6808	6809	6810	6811	6812	6813
6814	6815	6816	6817	6818	6819	6820	6821	6822	6823	6824
6825	6826	6827	6828	6829	6830	6831	6832	6833	6834	6835
6836	6837	6838	6839	6840	6841	6842	6843	6844	6845	6846
6847	6848	6849	6850	6851	6852	6853	6854	6855	6856	6857
6858	6859	6860	6861	6862	6863	6864	6865	6866	6867	6868
6869	6870	6871	6872	6873	6874	6875	6876	6877	6878	6879
6880	6881	6882	6883	6884	6885	6886	6887	6888	6889	6890
6891	6892	6893	6894	6895	6896	6897	6898	6899	6900	6901
6902	6903	6904	6905	6906	6907	6908	6909	6910	6911	6912
6913	6914	6915	6916	6917	6918	6919	6920	6921	6922	6923
6924	6925	6926	6927	6928	6929	6930	6931	6932	6933	6934
6935	6936	6937	6938	6939	6940	6941	6942	6943	6944	6945
6946	6947	6948	6949	6950	6951	6952	6953	6954	6955	6956
6957	6958	6959	6960	6961	6962	6963	6964	6965	6966	6967
6968	6969	6970	6971	6972	6973	6974	6975	6976	6977	6978
6979	6980	6981	6982	6983	6984	6985	6986	6987	6988	6989
6990	6991	6992	6993	6994	6995	6996	6997	6998	6999	7000

Determine hole pattern required for trim using **Installation Template Guide Chart** (blue sheet shown). Mark the listed holes on the **yellow lock template** (figure 7) enclosed with the lock. Ensure trim will not interfere with door stop or extend over door panel or glass.

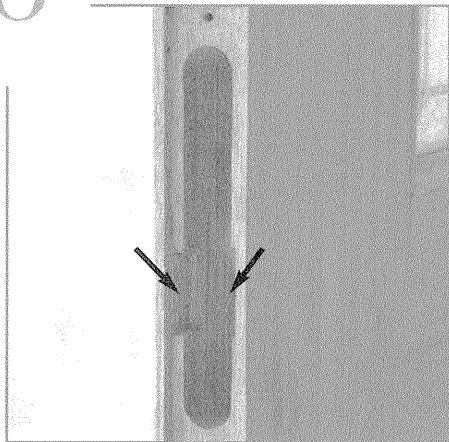
4

Mortise Lock Pocket For Lock Body



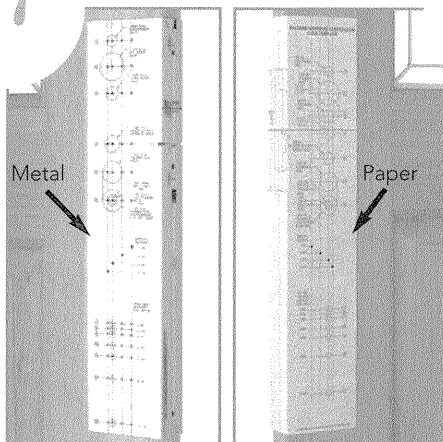
Mortise the pocket in the door 1/8" deeper than the lock being installed. Refer to the **Installation Template Guide**

6

Cut Relief Pockets

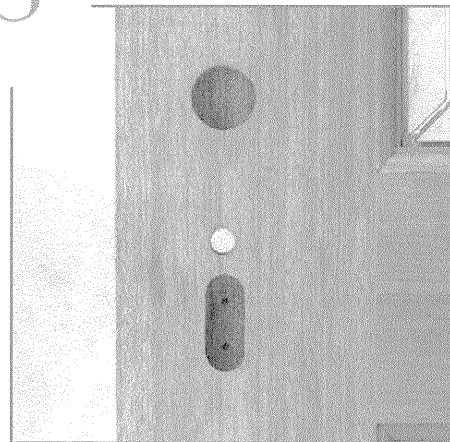
Cut the relief pockets 3/8" deep on both sides for the Latch Hinge, 2-1/2" and 2-3/4" backset only. (Does not apply for 1" front)

7

Mark Door

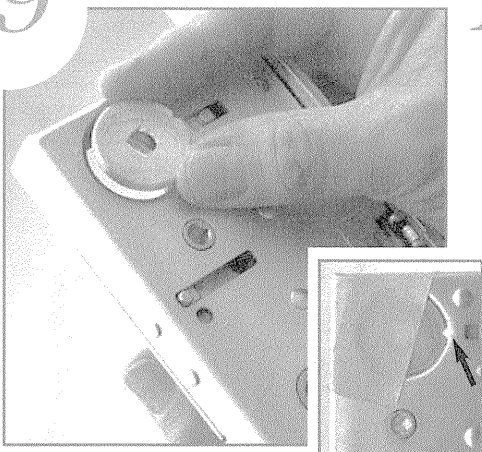
For 1-3/4" doors, fold the **yellow lock template** and attach to door using **Installation Template Guide**. Mark door at appropriate locations for lock and trim. **MARK APPROPRIATE BACKSET.** (Extra thick door conditions, see General Notes.) Metal template 8498.000 is available for purchase.

8

Drill Holes

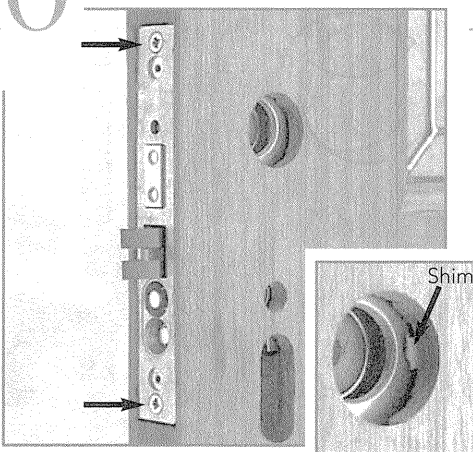
Drill appropriate holes as indicated on yellow lock template. **DO NOT OVERSIZE HOLES.** Only top two holes are drilled for knob to knob and lever to lever sets.

9

Install Cylinder Plug

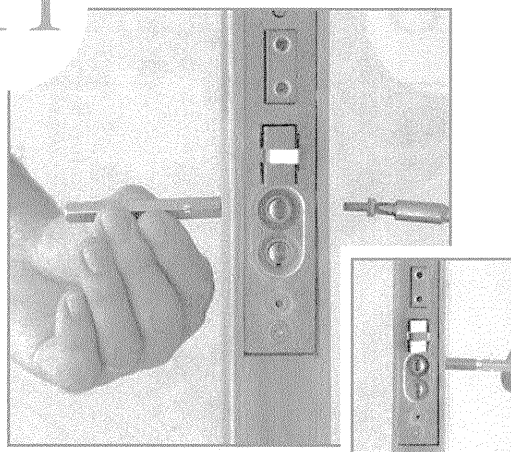
Thread the cylinder plug into interior side of lock. Place a strip of tape over plug to keep it from turning. Notch must be located as shown. (Double cylinder functions: OMIT THIS STEP.)

10

Install Lock

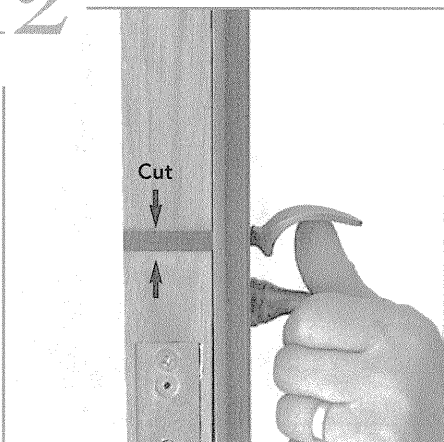
Drill two pilot holes for the lock face, adjust the bevel and install the lock. Shim between the lock and door on cylinder side as shown to prohibit the cylinder from pulling the lock case off center. (Failure to shim the lock may cause the cylinder to sit unevenly on the surface of the trim.)

11

Insert Spindle

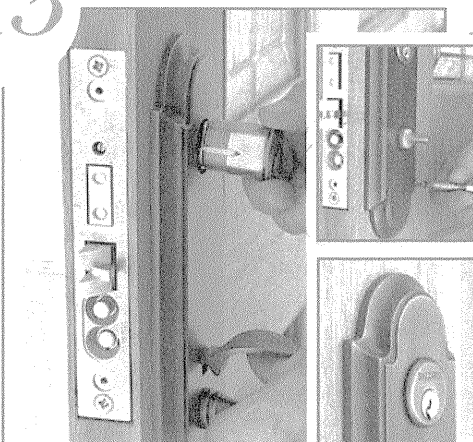
For handleset trim install the spindle from the inside with V groove facing bottom door hinge and thread the screw and lock washer into the spindle from the outside. Tighten securely. For knob to knob and lever to lever sets, install spindle from outside - go to step 13.

12

Size Thumbpiece

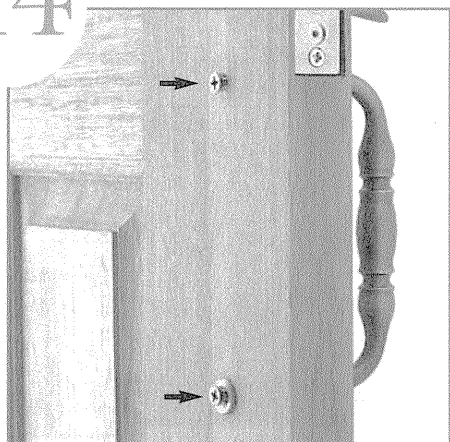
Cut the thumbpiece so that it will fully engage the lift lever on the bottom of the lock.

13

Install Cylinder

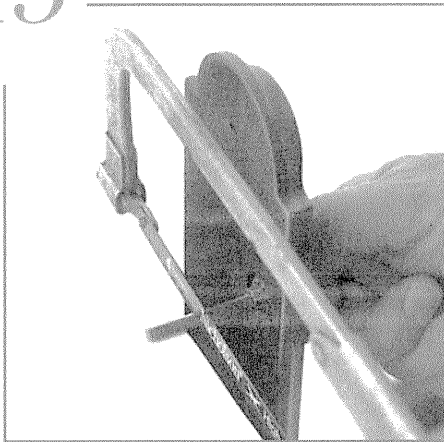
Place the cylinder through the trim. Partially insert key into cylinder. Thread the cylinder into the lock until it is against the trim and Baldwin name is horizontal. For knob to knob and lever to lever sets - Install aligning bushing and fasten trim with supplied screws. Remove bushing - go to step 14.

14

Install Thru-Bolts

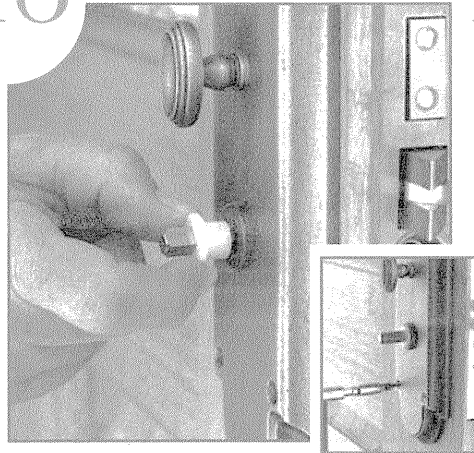
Start the thru-bolts which will hold the exterior trim. (Use screw cover washer under the bottom thru-bolt.) Tighten both securely.

15 Size & Cut Thumbturn



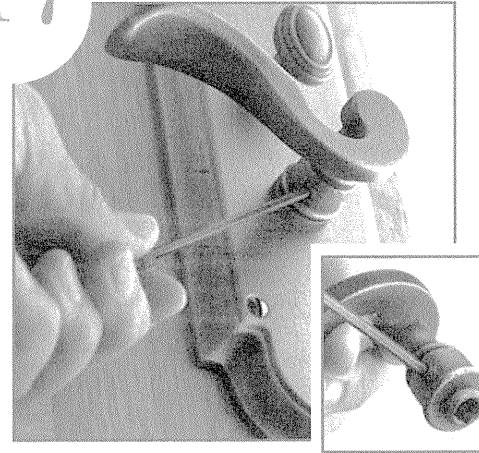
Cut the thumbturn tailpiece so that it goes half way through the lock. (as in step 12)

16 Install Interior Trim



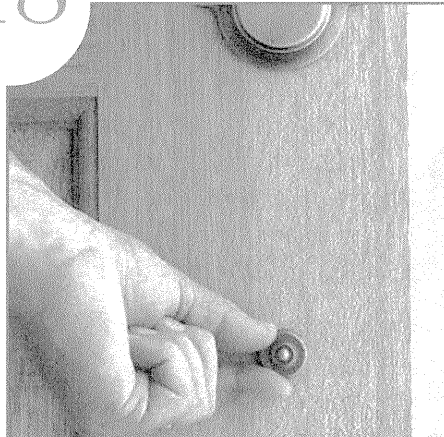
Place the interior trim on the door. Slide the aligning bushing onto the spindle so it fits into the knob hole. Drill pilot holes and fasten interior trim with supplied fasteners. Remove bushing and discard.

17 Complete Trim Installation



Start the set screw before sliding the knob or lever onto the spindle. Slide knob or lever onto the spindle and tighten securely. For knob to knob and lever to lever sets - install both sides - go to step 19.

18 Install Screw Cover



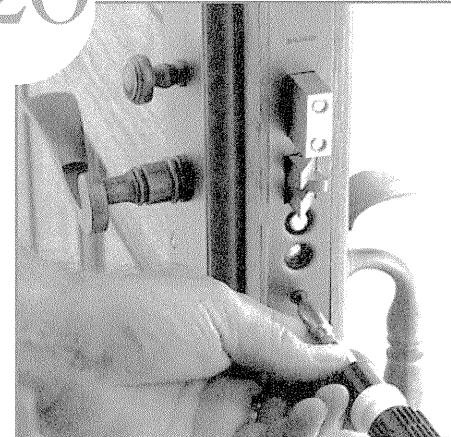
Thread decorative screw cover onto threaded washer.

19 Tighten Cylinder Set Screw



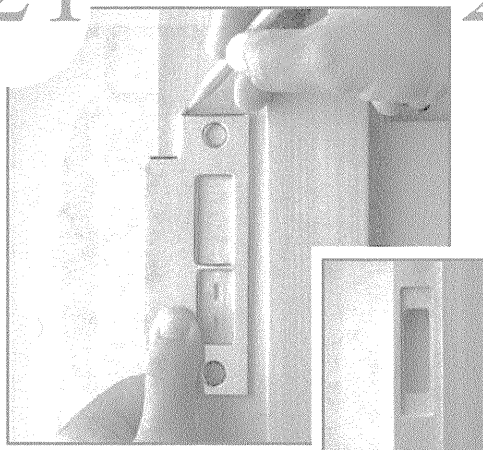
Tighten the cylinder set screw by turning clockwise. **Do not over tighten. Do not use a power screw driver.**

20 Install Armor Front



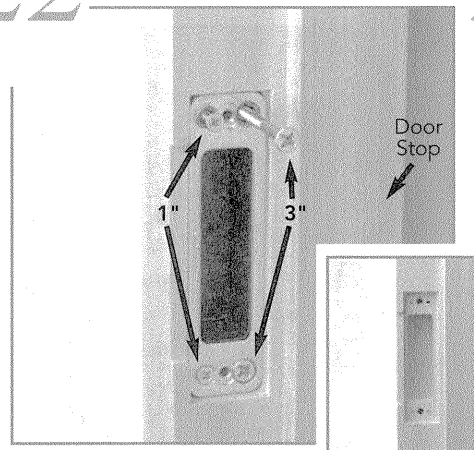
Install the armor front with the small phillips head screws supplied.

21 *Mark and Mortise Jamb for Strike Location



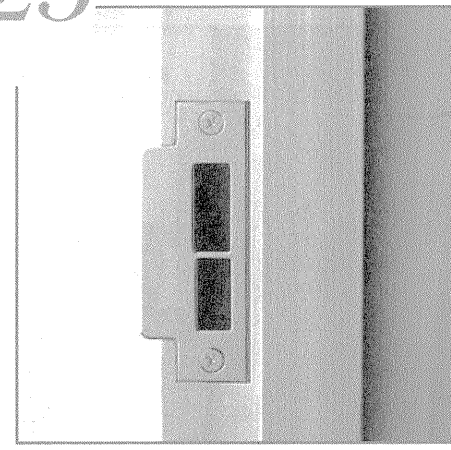
Mark the Jamb for the proper strike location. Coat extended latch bolt with graphite, powdered chalk or lipstick. Retract the bolt, close the door and actuate the knob or lever several times to mark the jamb. Add approximately 1/32" clearance from that mark.

22 Install Dust Box & Security Strike



Drill pilot holes for security strike and relief holes for finished strike. Install dust box and security strike with 1" and 3" screws on the stop side of the plate. *Note: Security Strikes are supplied only with locks which utilize cylinders.*

23 Install Strike Plate



Install strike plate with supplied machine screws.

*** APPLY ANY WEATHERSTRIPPING BEFORE STRIKE HAS BEEN INSTALLED.**